

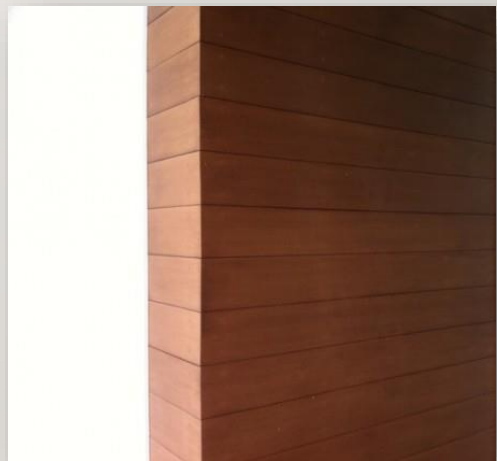


WALL CLADDING

GUIDELINES FOR INSTALLATION
OF RELWOOD™ OUTDOOR
WALL CLADDING

ABOUT RELWOODTM

- **Look & Feel of natural hard wood**
- **100% Water Proof**
- **100% Termite Proof**
- **High Fire Resistance**
- **Fungus & Mould Proof**
- **VOC Emission free**
- **No Splintering**
- **Does not crack or chip**
- **100% Recyclable**
- **UV Resistant**



INSTALLATION EXAMPLES



INSTALLATION EXAMPLES



GENERAL INFORMATION

- **Safety Tips:**
 - Always check for power, gas and water lines before installation
 - Always exercise caution while handling power equipment

- **Dimensions :**



Full width : 170 mm
 Visible width : 146 mm
 Height : 17 mm

- **Tips:**
 - The assembly should be carried out by a skilled specialist.
 - Only use construction fastening material and hardware suitable for outdoor use
 - Standard woodworking tools can be used for the processing of the material.
 - **SAWING:** It may be cut longitudinally and transversally with all customary saws.
 - **MILLING:** These profiles can be milled easily by means of customary woodworking machines.
 - **SANDING:** Depending on the required surface structure, we recommend the use of sand paper with grain between 24 and 60. Fine-grit sand paper should only be used for removal of dirt.
 - **DRILLING:** Drilling can also be done with customary standard wood drills.

PRE-TREATMENT

- Application of stain and lacquer –

RelWood™ comes in a standard sanded surface of Yellow Teak colour. On this, any shade or colour can be achieved using water based or solvent based stains. In order to obtain a uniform and optimal colour result, we recommend that the stain should be applied under consistent basic conditions, before installation and on each plank individually.

RelWood™ is a material that is highly resistant to UV. However, in order to protect from soiling and to make cleaning easier, we recommend application of a top coat or lacquer. This may be water based or solvent based.

For more information, please refer to the “Surface Finishing Guide” for RelWood™.

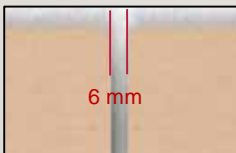
INSTALLATION INSTRUCTIONS

- **Rear Ventilation**



- Due to the high diffusion resistance of RelWood™ i.e. its high moisture/ water vapour resistance, it is always recommended
- The rear ventilation space must consistently measure at least 20 mm and may not be narrowed.

- **Spacing**



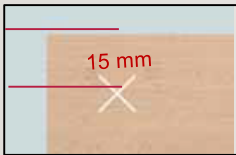
- Proper longitudinal spacing should be maintained between the planks based on the linear expansion which is dependent on temperature. Assuming a temperature variation of 60 C at the given location, a spacing of 6 mm should be maintained for a plank of 2440 mm. For a higher temperature variation please maintain higher gap.

INSTALLATION INSTRUCTIONS

- **Spacing**



- The distance from profile end to the screw connection may measure a maximum of 50 mm.



- The distance from screw to profile edge must measure at least 15 mm.

- **Batten Substructure**

- The support battening can be installed vertically or horizontally.
- Vertical substructure is used for horizontal cladding planks and horizontal substructure for vertical planks



INSTALLATION INSTRUCTIONS

- **The following distances have to be considered for support battening workmanship:**

- Maximum support span: 625 mm
- Maximum excess end : 50 mm

- **Fixing of profiles**



- Fasten the first screw at the side of the profile. The screw connection should be placed close to the rear balk to avoid potential deflection.
- Fasten the second screw in the groove of the profile.

(Note: Drill the hole approx. 1 mm larger than the screw diameter)

INSTALLATION INSTRUCTIONS



- Insert further profiles in the previous one and screw fasten these in the groove.



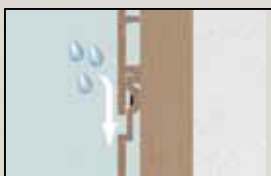
- If necessary, cut the closing profile to the correct width and screw connect at the edge. The screw connection should be fixed close to the rear balk to avoid potential deflection.

- DO NOT over tighten the screws. Screws should be loose enough to allow the board to move freely from side to side to allow for expansion and contraction.



- Corner solutions can be worked similar to wooden facades. Thermal expansion has to be considered for the spaces.

- **Fixing of profiles – Horizontal cladding**



- At horizontal installation, the profiles have to be mounted in a way that ensures controlled water drainage.

INSTALLATION INSTRUCTIONS

- **Lateral end piece**

- In order to achieve the proper finishing to the installation, use lateral end pieces cut according to the required site dimensions
- The lateral end pieces are prepared from RelWood™ UPB sheets
- The following 2 mechanisms are generally used:

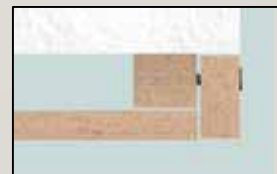


< Recessed end piece

Overlaying end piece >



- Also, consider the joint distances at the lateral end pieces

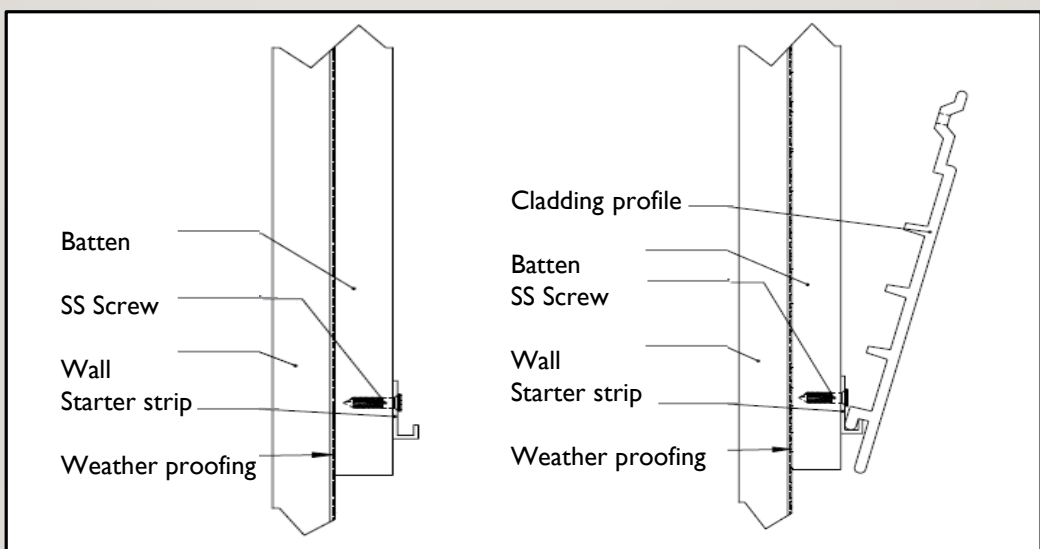


INSTALLATION INSTRUCTIONS

ALTERNATE TECHNIQUE

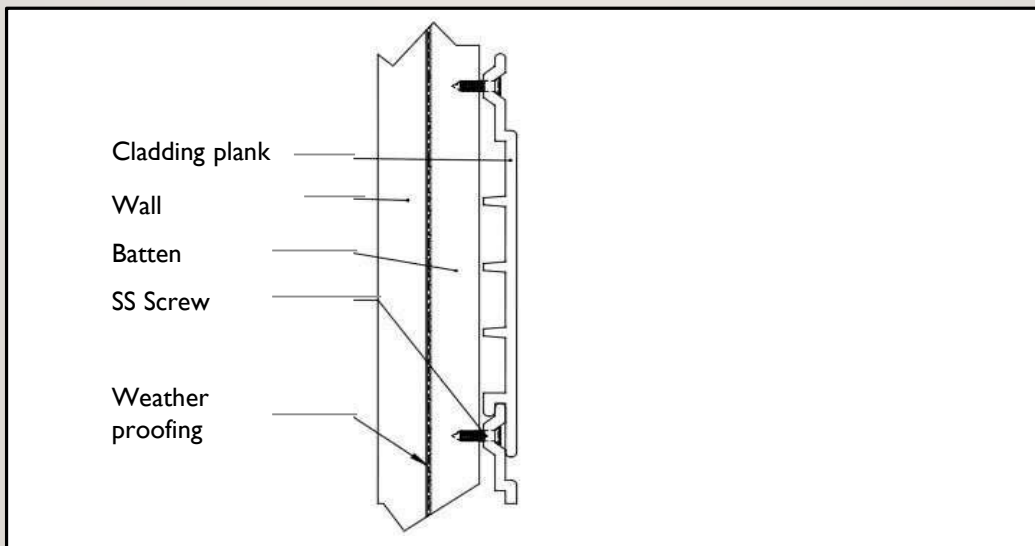
– Using Aluminium Starter Strip

- **Fixing of profiles – Horizontal cladding**
- Attach the Aluminium starter strip at the bottom of the battens following the spacing recommendations mentioned earlier. The RelWood™ planks will hang approx. 13 mm below the bottom of the starter strip therefore the starter strip should be attached accordingly.
- Hook the groove end of the first siding board into the starter strip.



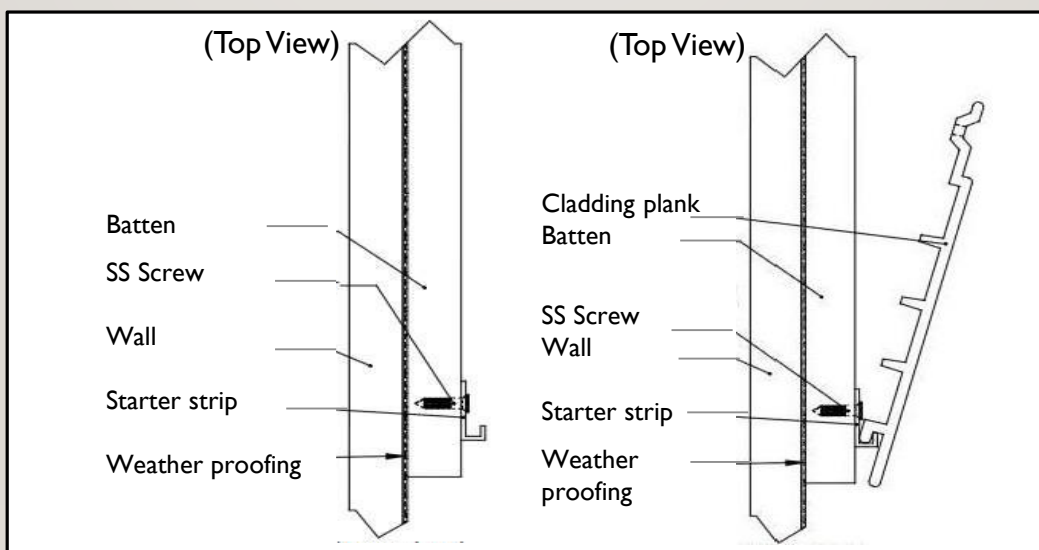
INSTALLATION INSTRUCTIONS

-
- Hook the groove end of the next plank onto the tongue of the installed siding board.
 - Continue installing cladding planks as outlined until cladding is finished
 - **DO NOT** over tighten the screws. Screws should be loose enough to allow the board to move freely from side to side to allow for expansion and contraction.



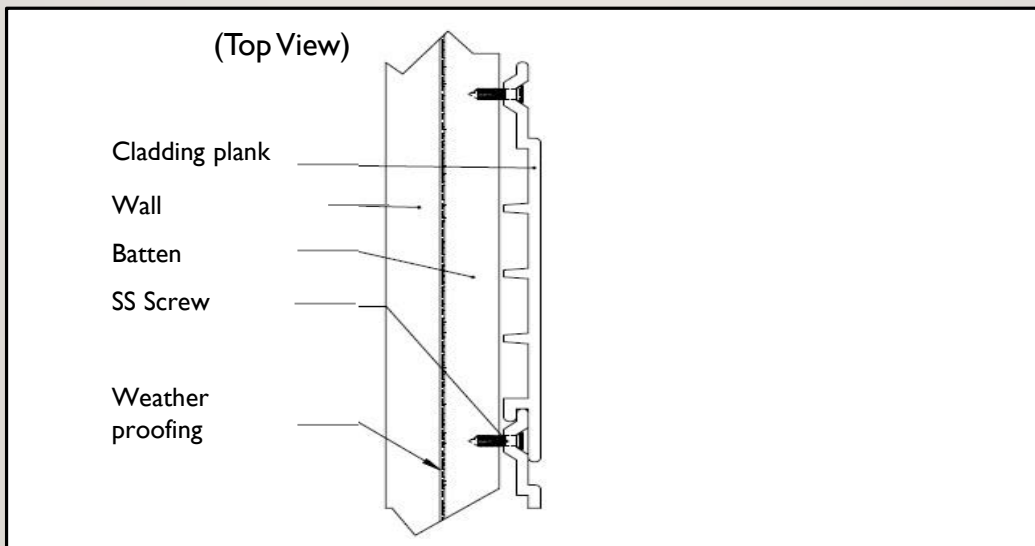
INSTALLATION INSTRUCTIONS

- **Fixing of profiles – Vertical cladding**
- Attach the starter strip vertically at one end of the batten substructure following the spacing recommendations. The RelWoodTM cladding boards will hang 13 mm beyond the starter strip therefore the starter strip should be attached accordingly. If the siding is starting in a corner the Aluminium corner trim attachment and the starter strip should be attached at the same time.
- Hook the groove end of the first siding board into the starter strip.



INSTALLATION INSTRUCTIONS

- DO NOT over tighten the screws. These screws should be placed in the center of the slotted hole and loose enough to allow the board to move freely in the vertical direction allowing for expansion and contraction.
- Hook the groove end of the next plank onto the tongue of the installed cladding plank
- Continue installing siding boards as outlined until cladding is finished.



IMPORTANT INFORMATION

Important instructions

- ! Please check the material quality prior to installation. In case of complaints the material may not be installed.
- ! Please adhere to all current standards and regulations
- ! Illustrations in this guideline are only for reference and are no mechanical drawings and display no technical solutions

Please direct all product inquiries to:

Reliance Industries Ltd.,
Reliance Corporate Park,
Bldg. 8, Wing A, First Floor,
Thane-Belapur Road, Ghansoli,
Navi Mumbai 400701
Email: relwood.reliance@ril.com
Phone: 022 447 44200 / 81354 / 83883



RelWood™ - One material Endless Possibilities